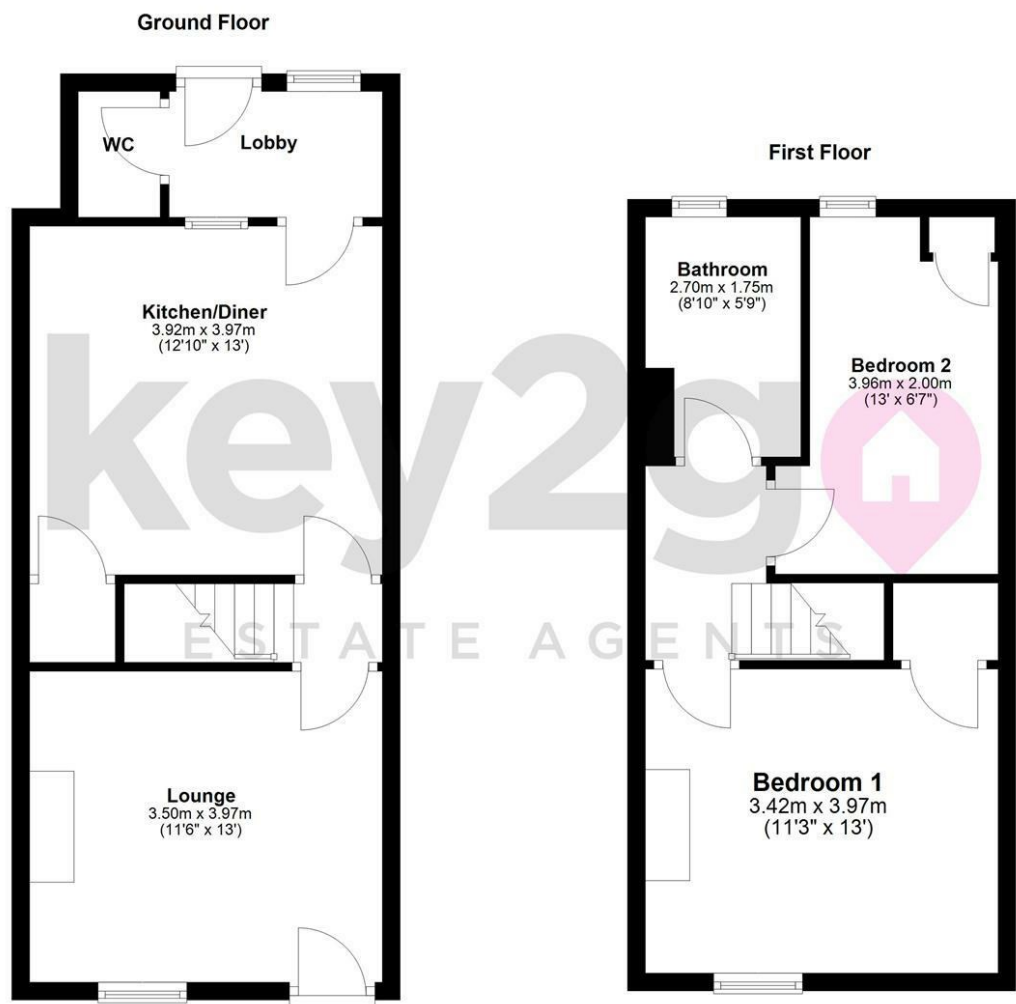


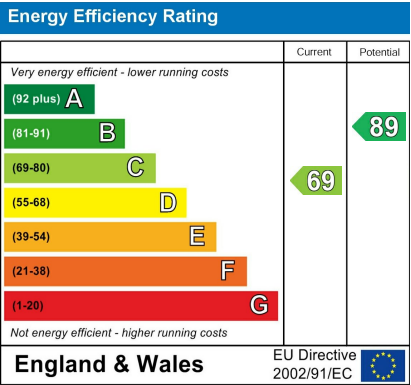
Floorplan



Area Map



Energy Efficiency Graph



Viewing

Please contact our Lettings Team Office on 0114 2478819 if you wish to arrange a viewing appointment for this property or require further information.

These particulars, whilst believed to be accurate are set out as a general outline only for guidance and do not constitute any part of an offer or contract. Intending purchasers should not rely on them as statements of representation of fact, but must satisfy themselves by inspection or otherwise as to their accuracy. No person in this firms employment has the authority to make or give any representation or warranty in respect of the property.



38 Chesterfield Road
Eckington, Sheffield, S21 4BD

£850 PCM



38 Chesterfield Road

Eckington, Sheffield, S21 4BD

£850 PCM



A unique opportunity to rent this stunning and ready to move into two bedroom stone built terraced property which gives a cottage feel. Offering a low maintenance garden, downstairs WC and a stylish kitchen and bathroom. Ideal road links to Chesterfield and M1 Motorway. Close to the countryside and a choice of schools.

SUMMARY

A unique opportunity to rent this stunning, two bedrooomed stone built terraced property which gives a cottage feel. Offering a low maintenance garden, downstairs WC and a stylish kitchen and bathroom. Ideal road links to Chesterfield and M1 Motorway. Close to the countryside and a choice of schools. Perfect for a couple or single person!

